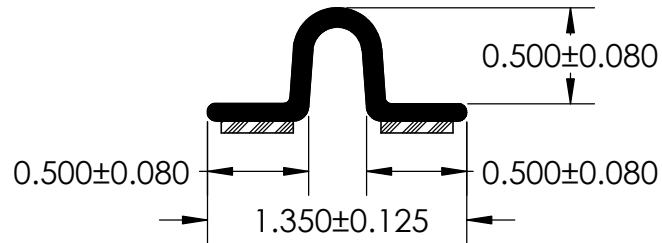
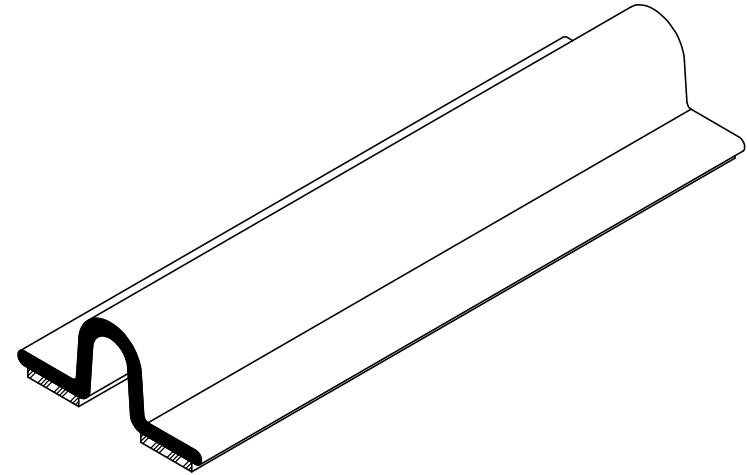


NOTES:

- 1) CLOSED CELL EPDM SPONGE RUBBER (0.699 G/CM³)
- 2) 3/8" 3M ST-1200 HEAT ACTIVATED TAPE (0.006 LB/FT)



UNI-GRIP, INC.

9823 STATE ROUTE 53 N
UPPER SANDUSKY, OHIO 43351

PROPRIETARY AND CONFIDENTIAL: THE INFORMATION CONTAINED IN THIS DRAWING IS THE SOLE PROPERTY OF UNI-GRIP, INC. ANY REPRODUCTION IN PART OR AS A WHOLE WITHOUT THE WRITTEN PERMISSION OF UNI-GRIP, INC. IS PROHIBITED.	UNLESS OTHERWISE SPECIFIED: DIMENSIONS ARE IN INCHES TOLERANCES PER ARPM CLASS 3	TITLE: <p style="text-align: center; font-size: 1.2em;">GF-145-T</p>		
	WEIGHT <p style="text-align: center; font-size: 1.2em;">0.078 LB/FT</p>	ASTM D1056 <p style="text-align: center; font-size: 1.2em;">2A2</p>	SIZE <p style="text-align: center; font-size: 1.5em; font-weight: bold;">A</p>	DWG. NO. <p style="text-align: center; font-size: 1.2em;">UG-1-TS-375-TP-067</p>
DOCUMENT CONTROL NUMBER <p style="font-size: 1.1em;">UG-1-EN-001-FR-(111416)</p>	ASTM D2000 <p style="text-align: center; font-size: 1.2em;">N/A</p>	DR. BY C. VENT		DATE 12/19/2017
SCALE: 1:1		SHEET 1 OF 1		