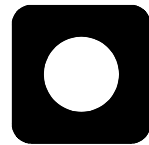
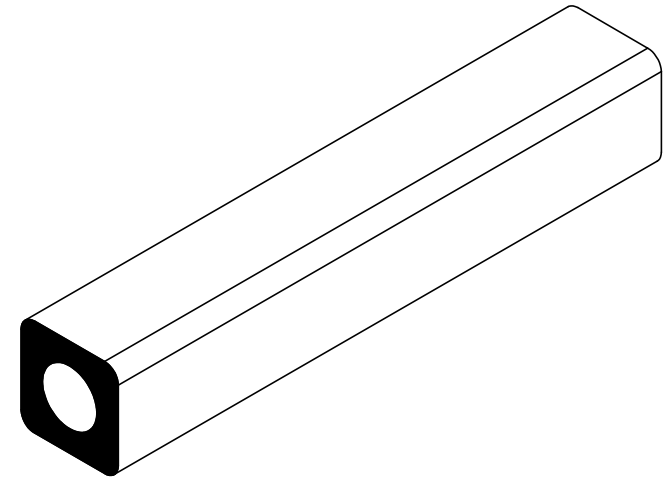


NOTES:

1) CLOSED CELL EPDM SPONGE RUBBER (0.725 G/CM³)



UNI-GRIP, INC.

9823 STATE ROUTE 53 N
UPPER SANDUSKY, OHIO 43351

PROPRIETARY AND CONFIDENTIAL: THE INFORMATION CONTAINED IN THIS DRAWING IS THE SOLE PROPERTY OF UNI-GRIP, INC. ANY REPRODUCTION IN PART OR AS A WHOLE WITHOUT THE WRITTEN PERMISSION OF UNI-GRIP, INC. IS PROHIBITED.		UNLESS OTHERWISE SPECIFIED: DIMENSIONS ARE IN INCHES TOLERANCES PER ARPM CLASS 3		TITLE: <p style="text-align: center;">SD-300</p>		
DOCUMENT CONTROL NUMBER UG-1-EN-001-FR-(111416)		WEIGHT 0.118 LB/FT ASTM D1056 2A3		SIZE <p style="text-align: center;">A</p>	DWG. NO. UG-1-RE-009	REV <p style="text-align: center;">A</p>
SCALE: 1:1		DR. BY C. VENT		DATE 12/11/2017	SHEET 1 OF 1	